

(19) World Intellectual Property Organization
International Bureau



(43) International Publication Date
22 August 2002 (22.08.2002)

PCT

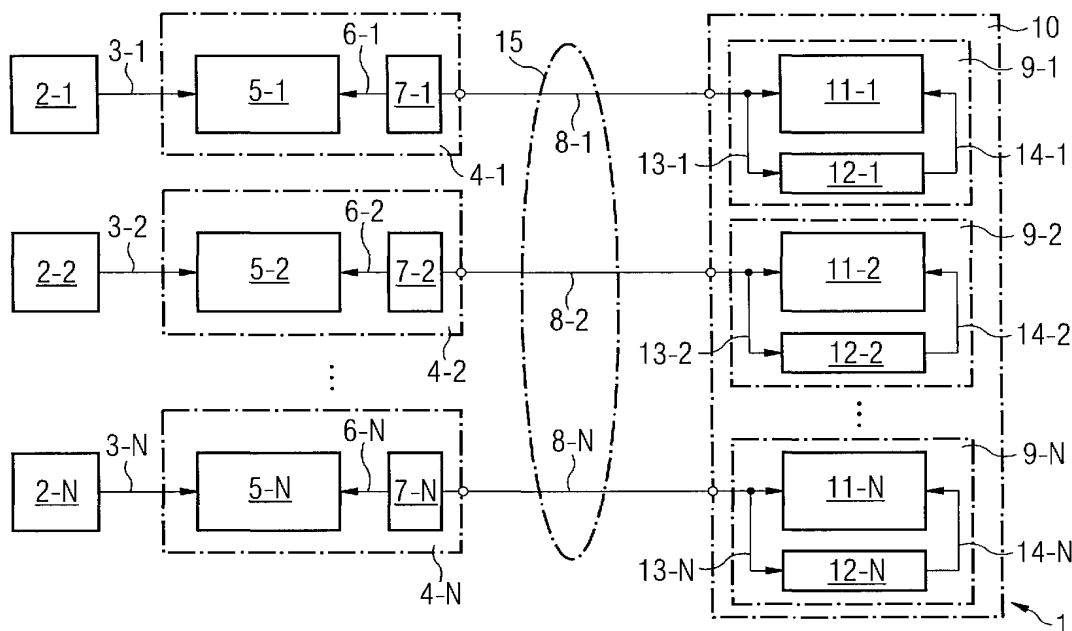
(10) International Publication Number
WO 02/065746 A1

- (51) International Patent Classification⁷: H04M 11/00, G06F 1/32
- (74) Agent: CHARLES, Glyndwr; Reinhard, Skuhra, Weise & Partner GbR, Post Box 44 01 51, 80750 Munich (DE).
- (21) International Application Number: PCT/EP01/01559
- (81) Designated States (national): AE, AG, AL, AM, AT, AU, AZ, BA, BB, BG, BR, BY, BZ, CA, CH, CN, CR, CU, CZ, DE, DK, DM, DZ, EE, ES, FI, GB, GD, GE, GH, GM, HR, HU, ID, IL, IN, IS, JP, KE, KG, KP, KR, KZ, LC, LK, LR, LS, LT, LU, LV, MA, MD, MG, MK, MN, MW, MX, MZ, NO, NZ, PL, PT, RO, RU, SD, SE, SG, SI, SK, SL, TJ, TM, TR, TT, TZ, UA, UG, US, UZ, VN, YU, ZA, ZW.
- (22) International Filing Date: 13 February 2001 (13.02.2001)
- (25) Filing Language: English
- (26) Publication Language: English
- (71) Applicant (for all designated States except US): INFINEON TECHNOLOGIES AG [DE/DE]; St.-Martin-Strasse 53, 81669 Munich (DE).
- (84) Designated States (regional): ARIPO patent (GH, GM, KE, LS, MW, MZ, SD, SL, SZ, TZ, UG, ZW), Eurasian patent (AM, AZ, BY, KG, KZ, MD, RU, TJ, TM), European patent (AT, BE, CH, CY, DE, DK, ES, FI, FR, GB, GR, IE, IT, LU, MC, NL, PT, SE, TR), OAPI patent (BF, BJ, CF, CG, CI, CM, GA, GN, GW, ML, MR, NE, SN, TD, TG).
- (72) Inventors; and
- (75) Inventors/Applicants (for US only): PORAT, Boaz [IL/IL]; Shimshon Street 39 A, 34678 Haifa (IL). FLEISCHHACKER, Christian [AT/AT]; Magdalensberg 10, A-9064 Pischeldorf (AT). STABER, Michael [AT/AT]; Rennsteinerstrasse 18, A-9500 Villach (AT). WEINBERGER, Hubert [AT/AT]; Soboth 162, A-8540 Soboth (AT).

Published:
— with international search report

[Continued on next page]

(54) Title: SYSTEM AND METHOD FOR ESTABLISHING AN XDSL DATA TRANSFER LINK



(57) Abstract: An xDSL data transfer system for data transfer comprising at least one xDSL user modem (4) connected via a data transfer medium (8) to a corresponding xDSL modem (9) within a central office, wherein the xDSL user modem (4) generates a pulse length modulated wake-up signal for switching the corresponding xDSL modem (9) within the central office (10) from a sleep mode to an operation mode.



WO 02/065746 A1



For two-letter codes and other abbreviations, refer to the "Guidance Notes on Codes and Abbreviations" appearing at the beginning of each regular issue of the PCT Gazette.

Description

System and method for establishing an xDSL data transfer link

5 The invention relates to a system and a method for establishing a data transfer link between an xDSL user modem and a corresponding xDSL modem within a central office.

Fig. 1 shows a conventional xDSL system with several xDSL
10 user modems, each connected via a telephone line to a corresponding xDSL modem within the central office. In a normal operation, the conventional xDSL modem within the central office is operating continuously and tries to establish a data transfer link with the corresponding remote
15 user xDSL modem connected via a telephone line. When the user xDSL modem is ready for data transfer, a data link is established by means of a start-up procedure. A central office comprises a very large number of xDSL modems connecting the users of the telephone network. The
20 disadvantage of the conventional xDSL system as shown in Fig. 1 is that the xDSL modems within the central office continuously try to establish a connection with the corresponding user xDSL modem and therefore consume much power. An xDSL modem within a central office consumes up to
25 1,5 Watt of power. Since the number of xDSL modems within a central office can be very large, the power consumption of all xDSL modems is significant.

Accordingly, it is the object of the present invention to
30 provide a method and a system for data transfer between an xDSL user modem and a corresponding xDSL modem within a central office which consume a minimum amount of power.

This object is achieved by a method for establishing a data
35 transfer link between an xDSL user modem and a corresponding xDSL modem within a central office having the features of

claim 1 and by an xDSL data transfer system having the features of patent claim 8.

The present invention provides a method for establishing a data transfer link between an xDSL user modem and the corresponding xDSL modem within the central office comprising the following steps:

generating a wake-up bit pattern identifying the user modem, pulse length modulating the generated wake-up bit pattern to generate a pulse length modulated wake-up signal, transmitting the pulse length modulated wake-up signal from the user xDSL modem via a data transfer medium to the corresponding xDSL modem within the central office, demodulating the transmitted wake-up signal by the xDSL modem within the central office, comparing the demodulated wake-up signal with a stored wake-up bit pattern for the detection of a transmission of the wake-up bit pattern, generating a wake-up command signal for switching the xDSL modem within the central office from a sleep mode to an operation mode for data transfer, when the wake-up bit pattern is detected.

In the sleep mode, the power consumption of the xDSL modem within the central office is low, thus minimizing the overall power consumption within the central office.

In a preferred embodiment of the method according to the present invention, the xDSL modem within the central office commences a start-up procedure, when it is switched to the operation mode.

In a further embodiment, the wake-up signal is transmitted periodically by the xDSL user modem.

In a further embodiment, the xDSL modem within the central office is switched from the operation mode to the sleep mode when the data transfer is finished.

- 5 In a further preferred embodiment, a detection counter is incremented when the wake-up bit pattern is detected.

In a further preferred embodiment, a wake-up command signal is generated when the detection counter reaches a
10 predetermined threshold value.

In a preferred embodiment, the threshold value for the detection counter is adjusted.

- 15 The invention provides further an xDSL data transfer system for data transfer comprising at least one xDSL user modem connected via a data transfer medium to a corresponding xDSL modem within the central office,
wherein the xDSL user modem generates a wake-up signal for
20 switching the corresponding the xDSL modem within the central office from a sleep mode to an operation mode.

In a preferred embodiment, the wake-up signal is pulse-length modulated.

- 25 In a preferred further embodiment, the xDSL user modem comprises
generating means for generating a wake-up pattern identifying the xDSL user modem, and
30 modulating means for pulse length modulation of the wake-up pattern to generate a pulse length modulation wake-up signal, wherein the pulse length modulated wake-up signal has a spectrum within the xDSL upstream frequency band.

- 35 In a preferred embodiment of the xDSL data transfer system according to the present invention, the generated wake-up bit pattern comprises 16 bits.

In a further embodiment, each bit of the wake-up bit pattern determines the duration of a pulse in the pulse length modulated signal.

5

In a still further embodiment, the level of the wake-up signal is less than a predetermined maximum PSD-signal level.

In a further embodiment of the xDSL data transfer system according to the present invention, the xDSL modem within the central office comprises demodulating means for demodulating the received analog pulse length modulated signal, storing means for storing a wake-up bit pattern which identifies a user modem, detecting means for detecting the demodulated wake-up bit pattern by comparing the demodulated received signal with the stored wake-up bit pattern, wake-up command generating means for generating a wake-up command to switch the xDSL modem from the sleep mode to the operation mode, when the received wake-up bit pattern is identical with the stored wake-up bit pattern.

In a further embodiment of the xDSL data transfer system according to the present invention, the demodulating means of the xDSL modem comprises a gain sequencer for amplifying the received analog signal with an adjustable gain, rectifying means for rectifying the amplified signal, a low-pass filter for filtering the rectified signal, and a comparator for comparing the filtered signal with an adjustable threshold generating an asynchronous pulse train supplied to the detecting means.

In a preferred embodiment of the xDSL data transfer system according to the present invention, the detecting means comprises

35

a synchronization means for synchronizing the asynchronous pulse train with an internal clock signal,
a pulse length detecting circuit for detecting the pulse length of each pulse in the synchronized pulse train,
5 a bit pattern generating means for generating a bit pattern depending on the detected pulse length,
a register for temporarily storing the received bit pattern,
a comparator which compares the received bit pattern with the stored wake-up bit pattern and which increments a counter
10 when the received bit pattern and the stored wake-up bit pattern is identical.

In a preferred embodiment of the xDSL system according to the present invention, the wake-up command generating means
15 generates the wake-up command when the counter reaches a predetermined threshold value.

In a preferred embodiment of the xDSL system according to the present invention the xDSL modems are VDSL modems.
20

In a preferred embodiment of the xDSL data transfer system, the data transfer medium is a telephone line.

The invention provides further an xDSL user modem comprising
25 a generating means for generating a wake-up pattern identifying the xDSL user modem, and
a modulating means for pulse length modulation of the wake-up bit pattern to generate the pulse length modulated wake-up signal,
30 wherein the pulse length modulated wake-up signal has a spectrum within the xDSL upstream frequency band.

The invention provides further an xDSL central office modem within a central office comprising
35 demodulating means for the demodulation of a received analog pulse length modulated signal,

storing means for storing a wake-up bit pattern which identifies the user modem connected to the xDSL office modem via a data transfer medium,
detecting means for detecting a demodulated wake-up bit
5 pattern by comparing the demodulated received signal with the stored wake-up bit pattern,
a wake-up command generating means for generating a wake-up command to switch the xDSL modem from the sleep mode to the operation mode when the received wake-up bit pattern is
10 identical with the stored wake-up pattern.

In the following description, a preferred embodiment of a method for establishing a data transfer link and an xDSL data transfer system for data transfer according to the present
15 invention is described with reference to the drawings.

Fig. 1 shows an xDSL data transfer system for data transfer according to the state of the art;

20 Fig. 2 shows an xDSL data transfer system for data transfer according to the present invention;

Fig. 3 shows a block diagram of additional units within an xDSL user modem according to the present invention;

25

Fig. 4 shows a block diagram of an xDSL modem within the central office according to the present invention;

30 Fig. 5 shows demodulating means of an xDSL modem within the central office according to the present invention;

Fig. 6 shows a block diagram of detecting means of the xDSL modem within the central office according to the present invention;

35

Fig. 7 shows a timing diagram of the pulse length modulated wake-up signal according to the present invention;

Fig. 8a, b show a flow diagram of the generation of a wake-up command signal by an xDSL modem within the central office according to the present invention.

5

The xDSL data transfer system 1 for data transfer according to the present invention is shown in Fig. 2. The xDSL data transfer system comprises N data sources 2-1 to 2-N, each generating a data upstream signal. The data upstream signal is supplied via signal lines 3-1 to 3-N to the corresponding xDSL user modem 4-1 to 4-N. The xDSL user modem 4 consists of a conventional xDSL modem 5 which is connected on its output side via a line 6 to a wake-up signal generating unit 7 which generates a wake-up signal. The xDSL user modem 4 is connected via a physical medium, e.g. a twisted telephone line, to a corresponding xDSL modem 9 within a central office 10. Each xDSL modem 9 of the central office 10 comprises a conventional xDSL modem 11 and a wake-up signal detection unit 12 for detecting a wake-up signal received via the telephone line 8. The wake-up signal detection unit 12 is connected to the telephone 8 via line 13 and sends a wake-up command signal via a control line 14 to the xDSL modem 11 to switch the xDSL modem from a sleep mode to an operation mode for data reception.

25

The wake-up signal generating unit 7 of the xDSL user modem 4 generates a wake-up signal via the telephone line 8 to its corresponding xDSL modem 9 within the central office 10. The transmitted wake-up signal is detected by the wake-up signal detection unit 12 so that the xDSL modem 11 is switched from a sleep mode to an operation mode for data transfer. Each user modem 4 generates a wake-up signal which is unique to the user modem 4 so that the wake-up signal detection unit 12 is insensitive to far end cross-talk (FEXT) between different telephone lines 8. The unique wake-up signal for each user modem 4 guarantees that erroneous wake-ups of other xDSL-modems as a consequence of far end cross-talk (FEXT) are

35

prevented. Accordingly, the different telephone lines 8-1 to 8-N can be arranged in a common telephone cable 15.

When an xDSL user modem 4 is inactive, the corresponding xDSL modem 9 within the central office 10 is in a sleep mode. Since a data source 2 like a personal computer 2 normally does not send a data upstream signal to the central office for the most part of the day, the corresponding xDSL modem 9 within the central office 10 is in the sleep mode for most of the time. In the sleep mode, the xDSL modem 9 consumes only a minimum necessary amount of electrical power. The xDSL modem 9 is switched to the power-consuming operation mode only when the wake-up signal from the corresponding xDSL user modem 4 is detected. When the user turns on the power of the user modem 4 and wishes to establish a data connection, the user modem 4 generates a wake-up signal and sends it via the telephone line 8 to the corresponding xDSL modem 9 in the central office. The wake-up signal detection unit 12 detects a received wake-up signal and switches the xDSL modem 9 to an operation mode. The xDSL modem 9 then commences a start-up procedure. When the user ends the data connection, the xDSL modem 9 within the central office 10 is switched back to the sleep mode.

Fig. 3 shows a wake-up signal generating unit 7 within an xDSL user modem 4 according to the present invention. The wake-up signal generating unit 7 comprises a wake-up pattern generating means 16 for generating a wake-up bit pattern identifying the xDSL user modem 4. The generated wake-up bit pattern is supplied via a line 17 to a modulation means 18. The modulation means 18 performs a pulse length modulation of the upstream data signal supplied from the data source 2 via data line 6. The upstream data signal is pulse length modulated with the wake-up bit pattern to generate a pulse length modulated wake-up signal which is transmitted via line 8 to the corresponding xDSL modem 9 within the central office 10. The pulse length modulated wake-up signal has a frequency

range within the xDSL upstream frequency band. For a VDSL application, the upstream frequency band is between 3,5 MHz and 5 MHz. The generated wake-up signal can pass through passive magnetic elements such as transformers, and does not get blocked before it reaches the wake-up detection unit 12 within the xDSL modem 9 in the central office 10.

In a preferred embodiment, the wake-up bit pattern generating means 16 generates a wake-up bit pattern which comprises 16 bits. This comparatively short bit pattern ensures that the wake-up process is completed within a relatively short time, e.g. within 100 milliseconds.

Fig. 7 shows an example for a wake-up signal generated by the wake-up generating means 7 of a user xDSL modem 4. The wake-up signal has a flat frequency spectrum in the xDSL upstream frequency band modulated by a duty cycle modulation. A sequence of N bits each of a duration of d microseconds is transmitted periodically by the user modem 4 until it is detected by the wake-up detection unit 12 within the xDSL modem 9 of the central office 10. Each bit of the wake-up bit pattern is represented by a pulse of d_{on} microseconds on and d_{off} microseconds off, where $d_{on} < d_{off}$, if the bit is logical low, and $d_{on} > d_{off}$, if the bit is logical high. In a preferred embodiment, the wake-up bit pattern comprises 16 bits, duration d is approximately 100 microseconds, wherein $d_{on} = 0,25 d$, when the bit is logical low, and $d_{on} = 0,75 d$, when the bit is logically high. Fig. 7 shows an example for a wake-up signal during one period of the wake-up signal. Fig. 7 shows only the signal envelope. The signal itself is a random noise signal whose spectrum coincides with the spectrum of a standard xDSL upstream signal.

Fig. 4 shows a block diagram of the wake-up signal detection unit 12 within an xDSL modem 9 of the central office 10. The wake-up signal detection unit 12 comprises demodulating means 19 for demodulating the received analog pulse length

modulated signal. The demodulating means 19 are connected via a line 20 to comparing means 21 which compare the demodulated received bit pattern with the wake-up bit pattern stored within storing means 22. The storing means 22 store a wake-up bit pattern which identifies the corresponding user modem 4. The storing means 22 are connected to the comparing means 21 via a line 23. If the comparator 22 detects that the demodulated bit pattern is identical with the stored wake-up bit pattern, it sends a detection signal via a line 24 to a wake-up command generating means 25 which generates the wake-up command and transmits the wake-up command via a control line 14 to the corresponding modem 11. The wake-up command switches the xDSL modem 9 from the sleep mode to the operation mode. The wake-up signal detection unit 12 can be implemented by a simple circuitry that does not require large power. Accordingly, the power consumption of the wake-up signal detection unit 12 is only a small percentage of the power consumed by the complete xDSL modem 9. The wake-up signal detection unit is insensitive to the absolute power level of the received wake-up signal in order to accommodate all line distances. The wake-up signal detection unit 12 is provided for detecting a bit pattern, not a signal energy.

Fig. 5 shows a preferred embodiment of the demodulating means 19 within the wake-up detection unit 12 according to the present invention. The demodulating means 19 comprises a gain sequencer 26 for amplifying the received analog signal with an adjustable gain, the rectifying circuit 27 rectifying the amplified signal, a low-pass filter 28 for filtering the rectified signal and a comparator 29 for comparing the filtered signal with an adjustable threshold generating an asynchronous pulse train supplied to the detecting means 21. The gain sequencer 26 amplifies the incoming wake-up signal and comprises an operation amplifier 30, resistors 31a, 31b and adjustable resistors 32a, 32b. The gain sequencer 26 amplifies the incoming wake-up signal with an increasing gain until the wake-up signal is detected by the wake-up detection

means. The rectifying means 27 comprising an operational control amplifier 33 which controls switches 34a, 34b supplies a rectified signal to the following low-pass filter 28. The low-pass filter 28 shown in Fig. 5 removes the high frequency noise and tracks the signal envelope of the received wake-up signal. The low-pass filter 28 further removes residual DC signal components. The low-pass filter 28 is an active filter comprising an operational amplifier 35, resistors 36, 37, 38 and capacitors 39, 40. The output of the operational amplifier 35 is connected via line 41 to comparing means 29 including a comparator 42, a resistor 43a and a capacitor 44a.

The output of the comparator 42 is connected via line 20 to the bit pattern comparing means 21 comparing the output bit pattern of the comparator 42 with the stored wake-up bit pattern. The bit pattern comparing means 21 generates a detecting signal with the received bit pattern output by a comparator 42 which is identical with the wake-up bit pattern stored in the storage means 22 and sends the detecting signal to the wake-up command generating means 25.

Fig. 6 shows a preferred embodiment of the bit pattern detecting means 21. The bit pattern detecting means 21 comprises a synchronization circuit 43 for synchronizing the asynchronous pulse train received from the demodulating means 19. The received pulse train or bit pattern is synchronized with an internal clock signal. The detecting means 21 further comprises a pulse length detecting circuit 44 connected to the synchronization circuit 43 via line 45. The output of the pulse length detecting circuit 44 is connected on its output side via line 46 to a register 47 for temporarily storing the received bit pattern. A bit comparator 48 connected to the register 47 via a line 49 compares the received bit pattern stored in the register 47 with the wake-up bit pattern stored in the memory 22 and increments a counter 51 via a control line 50, when the received bit pattern and the stored bit

pattern is identical. The wake-up command generating means 25 generates a wake-up command, when the counter 51 reaches an adjustable threshold value.

5 Fig. 8a shows a flow diagram of a method for establishing a data transfer link between the xDSL user modem 4 and the corresponding xDSL modem 9 in the central office 10 according to the present invention.

10 In a step S1, a wake-up bit pattern identifying the xDSL user modem 4 is generated by a bit pattern generating circuit 16.

In a step S2, the generated wake-up bit pattern is used for pulse length modulating an upstream data signal to generate a
15 pulse length modulated wake-up signal by means of a modulating circuit 18.

The pulse length modulated wake-up signal is transmitted from the user xDSL modem 4 via the telephone line 8 to the xDSL
20 modem 9 within the central office 10 in a step S3.

In a further step S4, the transmitted wake-up signal is demodulated by demodulating means 19 within the wake-up signal detection unit 12 of the xDSL modem 9.

25

In a step S5, the demodulated wake-up signal is compared with a wake-up bit pattern stored in the register 22.

In step S6, a wake-up command signal is generated when the
30 received bit pattern is identical with the stored wake-up bit pattern, and the modem 11 is switched from a sleep mode to an operation mode to start a start-up procedure.

After the modem 11 has been switched into the operation mode,
35 the xDSL modem 9 commences a start-up procedure to establish a data link with the corresponding xDSL user modem 4. After the start-up procedure, the normal data transfer is

performed. When the data transfer is finished, the xDSL modem 9 within the central office 10 is switched from the operation mode to the sleep mode.

5 Fig. 8b shows a preferred embodiment of step S6 within the main routine according to the present invention as shown in Fig. 8a. The received bit pattern stored temporarily in register 47 is compared to the wake-up bit pattern stored in register 22, and when both bit patterns are identicaly,
10 counter 51 of comparing means 21 is incremented in a step S6-2. The value of the counter 51 is compared in step S6-3 with a predetermined threshold value, and a wake-up command signal is generated in step S6-4 when the counter reaches the
15 modem 9 from the sleep mode to the operation mode.

List of reference numerals

	1	xDSL data transfer system
	2	data source
5	3	line
	4	xDSL user modem
	5	modem
	6	line
	7	wake-up signal generating circuit
10	8	telephone line
	9	xDSL modem
	10	central office
	11	modem
	12	wake-up signal detecting unit
15	13	line
	14	line
	15	cable
	16	bit pattern generating means
	17	line
20	18	half-length modulation circuit
	19	demodulating means
	20	line
	21	comparing means
	22	storing means
25	23	line
	24	line
	25	wake-up command generating means
	26	train sequencer
	27	rectifying means
30	28	low-pass filter
	29	comparing means
	30	operation amplifier
	31	resistors
	32	adjustable resistors
35	33	operational amplifier
	34	switches
	35	operational amplifier

36 resistor
37 resistor
38 resistor
39 capacitor
5 40 capacitor
41 line
42 operational amplifier
43 resistor
44 capacitor
10 43 synchronization means
44 pulse length detecting circuit
45 line
46 line
47 register
15 48 bit comparator
49 line
50 line
51 counter

Patent claims

1. Method for establishing a data transfer link between an xDSL user modem (4) and a corresponding xDSL modem (9) within
5 a central office (10) comprising the following steps:
 - (a) generating (S1) a wake-up bit pattern identifying the user xDSL modem (4);
 - (b) pulse length modulating (S2) an upstream data signal with the generated wake-up bit pattern to generate a pulse length
10 modulated wake-up signal;
 - (c) transmitting (S3) the pulse length modulated wake-up signal from the user xDSL modem (4) via a data transfer medium (8) to the xDSL modem (9) within the central office (10);
 - 15 (d) demodulating (S4) the transmitted wake-up signal;
 - (e) comparing (S5) the modulated wake-up signal with a stored wake-up bit pattern for the detection of a transmission of the wake-up bit pattern from the xDSL user modem (4);
 - (f) generating (S6) a wake-up command signal, when the wake-
20 up bit pattern is detected for switching the xDSL modem (11) within the central office (10) from a sleep mode to an operation mode for data transfer.
2. The method according to claim 1, wherein the xDSL modem
25 (9) within the central office (10) commences a start-up procedure when it is switched to the operation mode.
3. The method according to claim 1, wherein the wake-up
30 signal is transmitted periodically by the xDSL user modem (4).
4. The method according to one of the preceding claims, wherein the xDSL modem (9) within the central office (10) is
35 switched from the operation mode to the sleep mode when the data transfer is finished.

5. The method according to one of the preceding claims, wherein a detection counter (51) is incremented when the wake-up bit pattern is detected.

5 6. The method according to one of the preceding claims, wherein the wake-up command signal is generated when the detection counter (51) reaches a threshold value.

7. The method according to claim 6, wherein the threshold
10 value is adjusted.

8. An xDSL data transfer system for data transfer comprising at least one xDSL user modem (4) connected via a data transfer medium (8) to a corresponding xDSL modem (9) within
15 a central office (10), wherein the xDSL user modem (4) generates a pulse length modulated wake-up signal for switching the corresponding xDSL modem (9) within the central office (10) from a sleep mode to an operation mode.

20

9. The xDSL data transfer system according to claim 8, wherein the xDSL user modem (4) comprises generating means (16) for generating a wake-up bit pattern identifying the xDSL user modem (4), and
25 modulating means (18) for the pulse length modulation of an upstream data signal with the wake-up bit pattern to generate the pulse length modulated wake-up signal, wherein the pulse length modulated wake-up signal has a spectrum within the xDSL upstream frequency band.

30

10. The xDSL data transfer system according to one of the preceding claims, wherein the generated wake-up bit pattern comprises 16 bits.

35 11. The xDSL data transfer system according to one of the preceding claims, wherein each bit of the wake-up bit pattern

determines the duration of a pulse length of a pulse of the pulse length modulated wake-up signal.

12. The xDSL data transfer system according to one of the
5 preceding claims, wherein the level of the wake-up signal is less than a predetermined maximum PSD-level.

13. The xDSL data transfer system according to one of the
10 preceding claims, wherein the xDSL modem (9) within the central office (10) comprises:
demodulating means (19) for demodulating the received analog pulse length modulated signal;
storing means (22) for storing a wake-up bit pattern which identifies a corresponding xDSL user modem (4);
15 comparing means (21) for comparing the received demodulated signal with the stored wake-up bit pattern; and
wake-up command generating means (25) for generating a wake-up command to switch the xDSL modem (9) from the sleep mode to the operation mode, when the demodulated wake-up signal is
20 identical with the stored wake-up bit pattern.

14. The xDSL data transfer system according to claim 13, wherein the demodulating means (19) of the xDSL modem (9) comprises a gain sequencer (26) for amplifying the received
25 analog signal with an adjustable gain;
rectifying means (27) for rectifying the amplified signal;
a low-pass filter (28) for filtering the rectified signal;
and
a comparator (29) for comparing the filtered signal with an
30 adjustable threshold generating an asynchronous pulse train which is supplied to the bit pattern comparing means (21).

15. The xDSL data transfer system according to one of the preceding claims, wherein the bit pattern comparing means
35 (21) comprises
a synchronization means (43) for synchronizing the asynchronous pulse train with an internal clock signal;

a pulse length detecting circuit (44) for detecting the pulse length of each pulse in the synchronized received pulse train and generating a logical bit value corresponding to the detected pulse length;

5 a register (47) for temporarily storing the received bit pattern;

a comparator (48) which compares the received bit pattern with the stored wake-up bit pattern and increments a counter (51), when the received bit pattern and the stored wake-up
10 bit pattern is identical.

16. The xDSL data transfer system according to one of the preceding claims, wherein the wake-up command generating means (25) generates the wake-up command, when the counter
15 (51) reaches an adjustable threshold value.

17. The xDSL data transfer system according to one of the preceding claims, wherein the xDSL modems (4, 11) are VDSL modems.

20

18. The xDSL data transfer system according to one of the preceding claims, wherein the data transfer medium (8) is a telephone line.

25 19. An xDSL user modem (4) comprising
a generating means (16) for generating a wake-up bit pattern identifying the xDSL user modem (4); and
modulating means (18) for the pulse length modulation of an upstream xDSL data signal with the generated wake-up bit
30 pattern to generate a pulse length modulated wake-up signal, wherein the pulse length modulated wake-up signal has a frequency range within the xDSL upstream frequency band.

20. An xDSL modem (11) within a central office (10)
35 comprising:
demodulating means (19) for demodulating a received analog pulse length modulated signal;

storing means (22) for storing a wake-up bit pattern
identifying an xDSL user modem (4);
comparing means (21) comparing the received demodulated
signal with the stored wake-up bit pattern;
5 wake-up command generating means (25) for generating a wake-
up command to switch the xDSL modem (9) from a sleep mode to
an operation mode, when the received bit pattern is identical
with the stored wake-up bit pattern.

FIG 1
State of the art

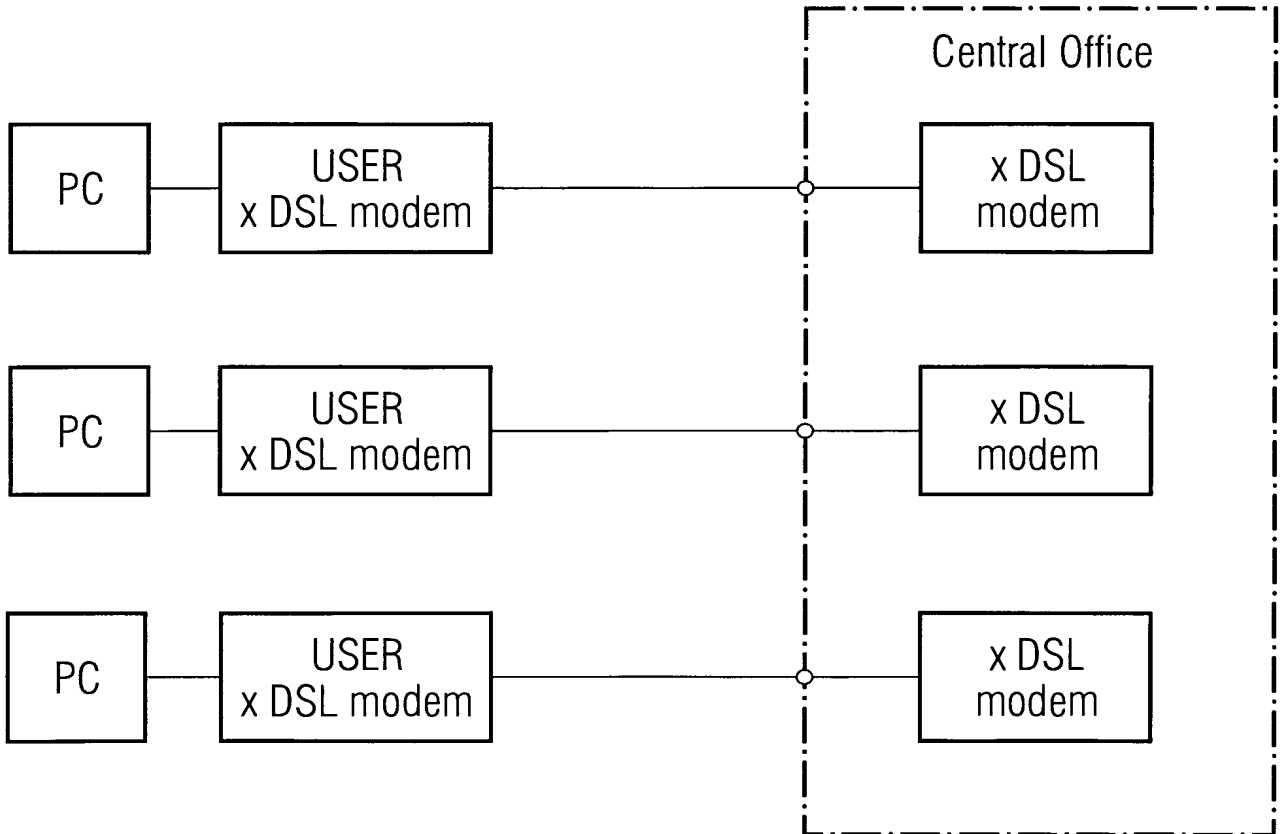


FIG 2

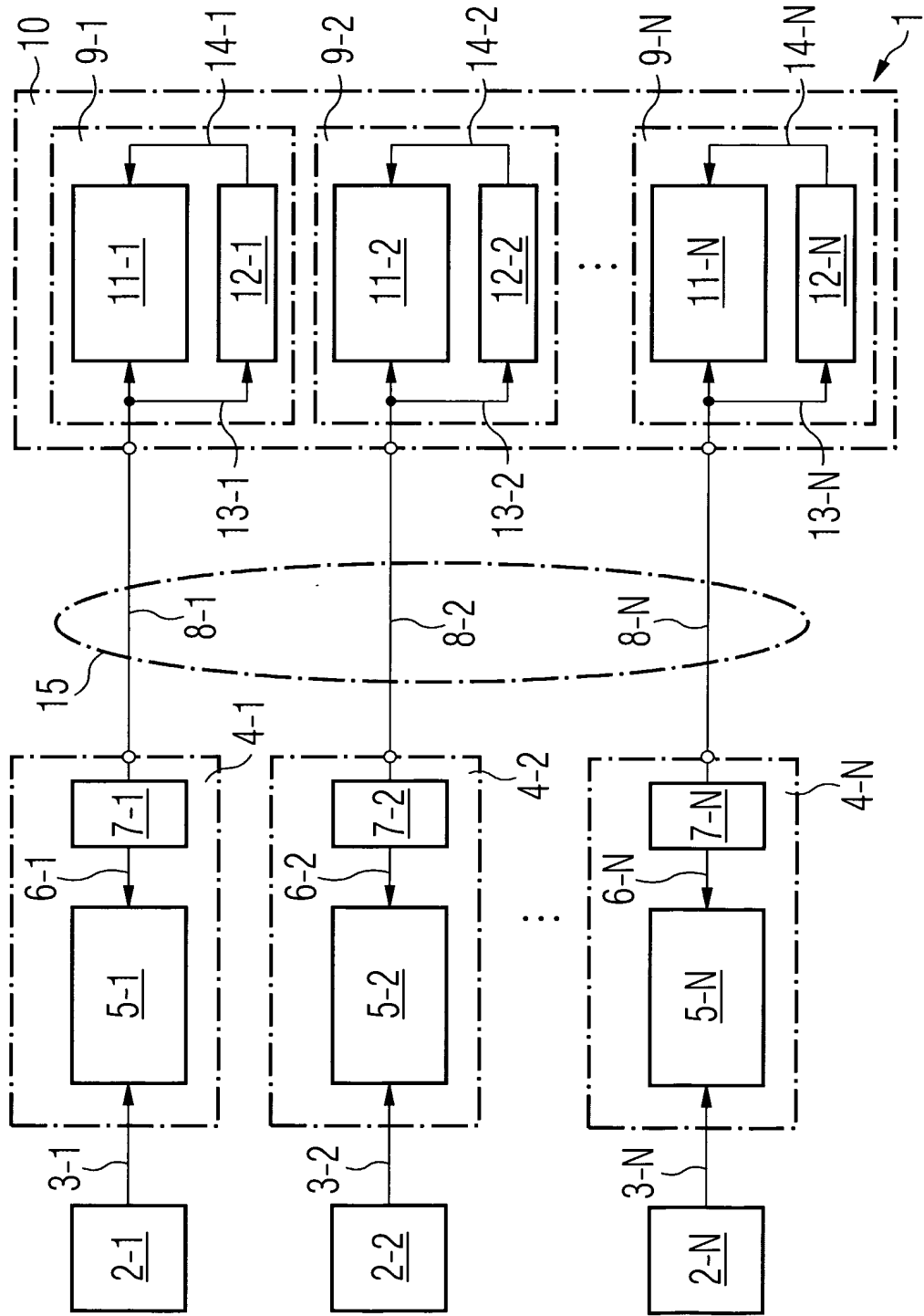


FIG 3

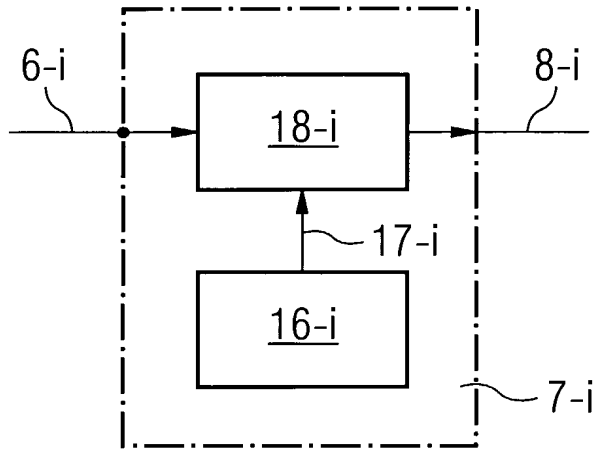
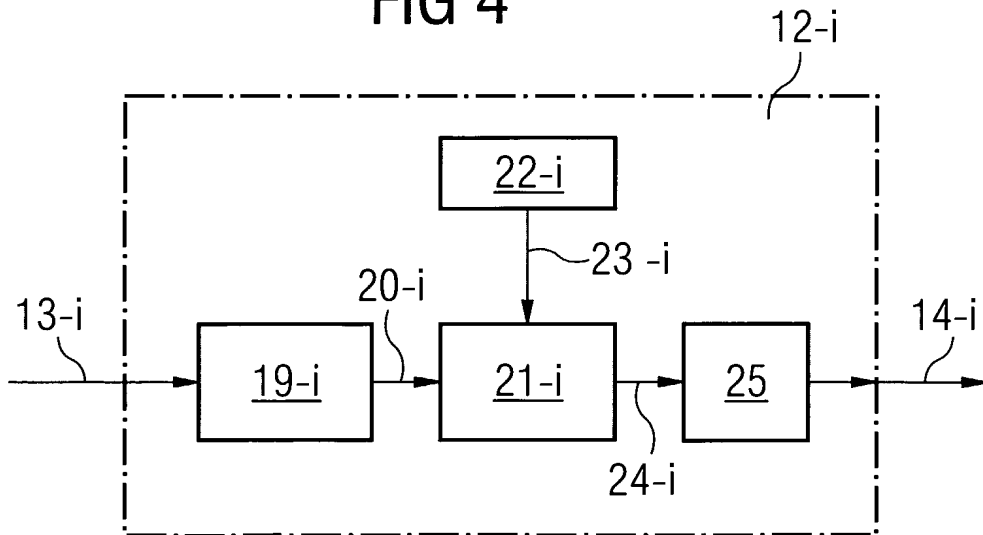


FIG 4



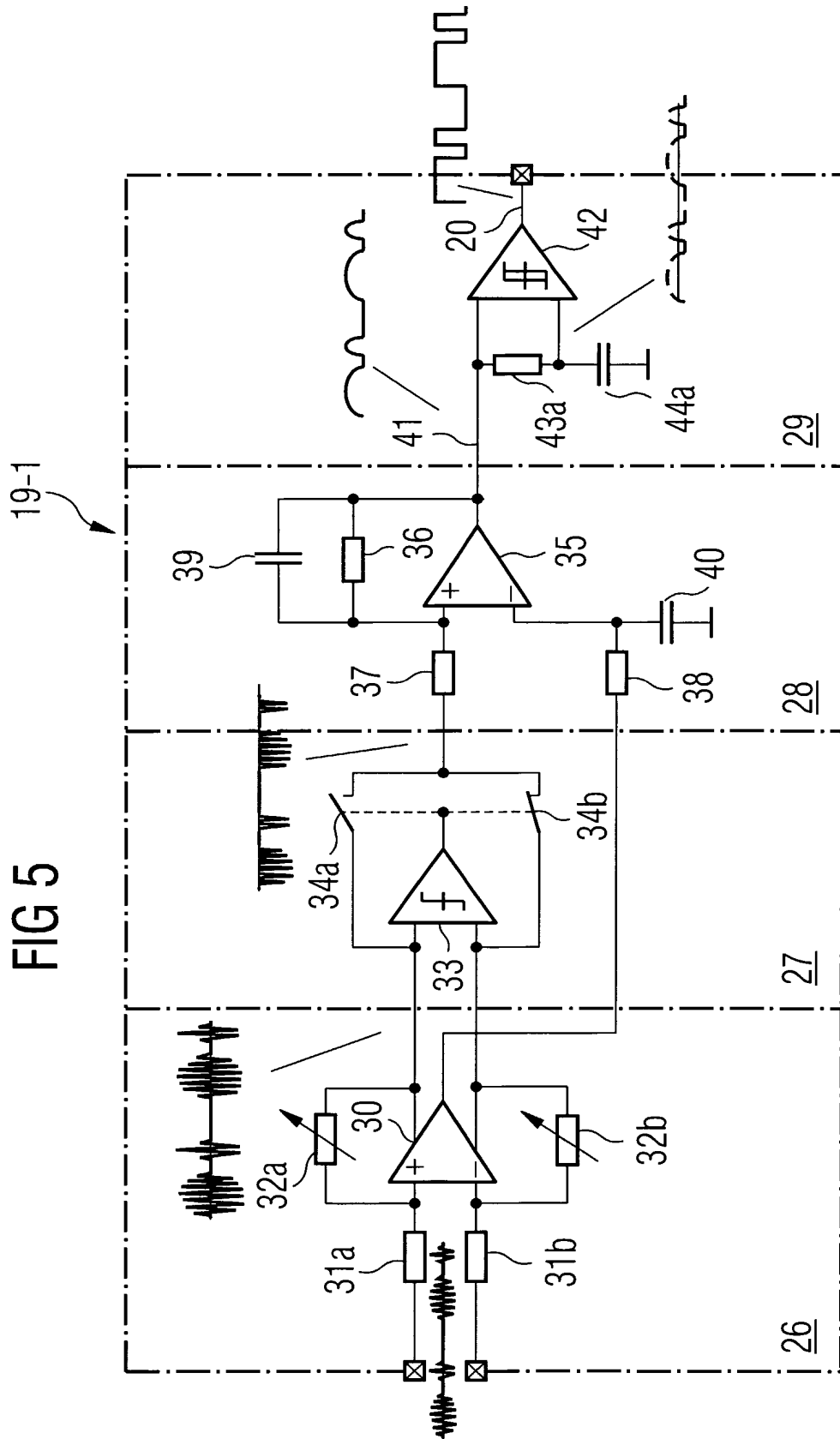


FIG 5

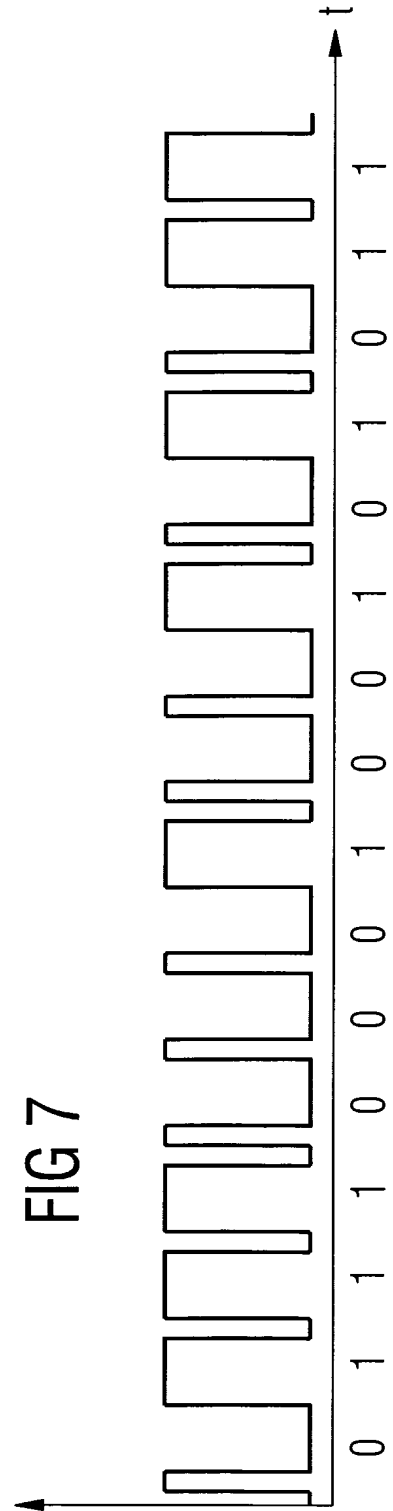
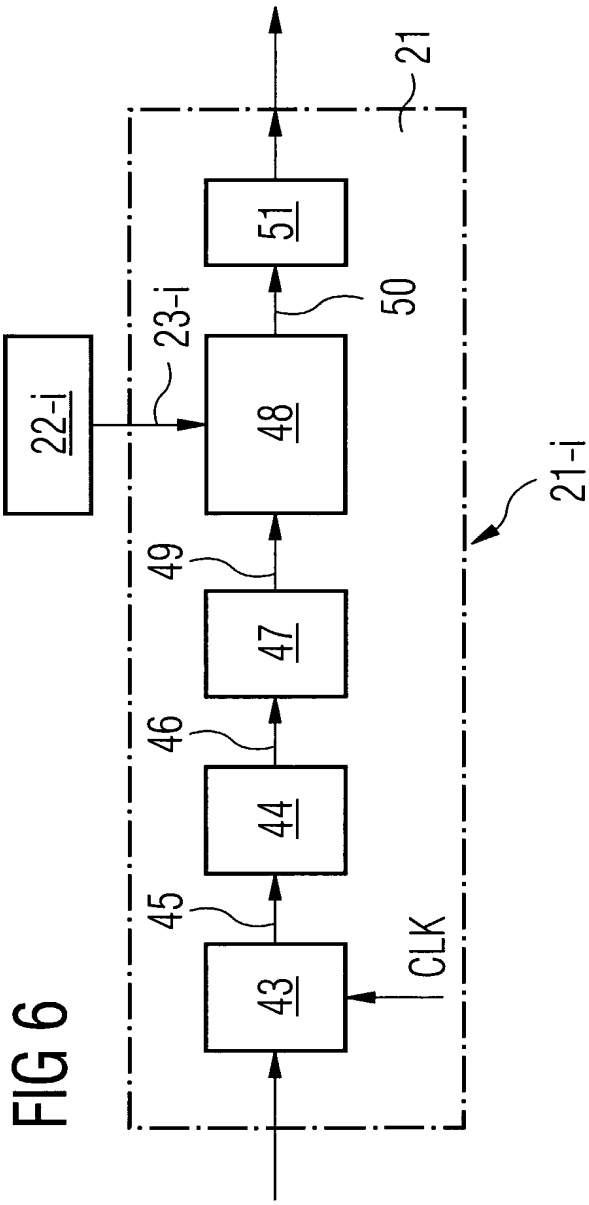


FIG 8a

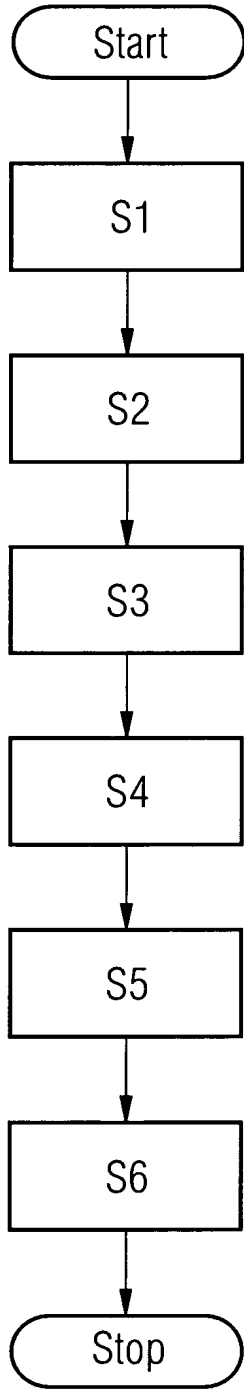
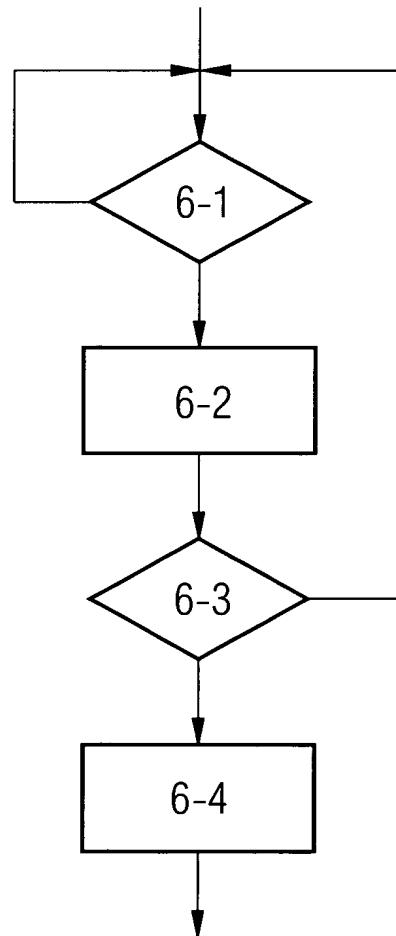


FIG 8b



INTERNATIONAL SEARCH REPORT

International Application No
PCT/EP 01/01559

A. CLASSIFICATION OF SUBJECT MATTER
IPC 7 H04M11/00 G06F1/32

According to International Patent Classification (IPC) or to both national classification and IPC

B. FIELDS SEARCHED
Minimum documentation searched (classification system followed by classification symbols)
IPC 7 H04M H04L G06F

Documentation searched other than minimum documentation to the extent that such documents are included in the fields searched

Electronic data base consulted during the international search (name of data base and, where practical, search terms used)
EPO-Internal, WPI Data, PAJ, INSPEC

C. DOCUMENTS CONSIDERED TO BE RELEVANT

Category *	Citation of document, with indication, where appropriate, of the relevant passages	Relevant to claim No.
A	<p>"G.992.2 - Splitterless asymmetric digital subscriber line (ADSL) transceivers" ITU-T SERIES G: TRANSMISSION SYSTEMS AND MEDIA, DIGITAL SYSTEMS AND NETWORKS, 'Online! 30 June 1999 (1999-06-30), pages 93-99, XP002186290 Retrieved from the Internet: <URL:http://www.ihserc.com> 'retrieved on 2001-12-20! paragraphs '13.1!', '13.2!', '13.3!', '13.4.5!', '13.5! ----- -/--</p>	1-20

Further documents are listed in the continuation of box C. Patent family members are listed in annex.

* Special categories of cited documents :

<p>*A* document defining the general state of the art which is not considered to be of particular relevance *E* earlier document but published on or after the international filing date *L* document which may throw doubts on priority claim(s) or which is cited to establish the publication date of another citation or other special reason (as specified) *O* document referring to an oral disclosure, use, exhibition or other means *P* document published prior to the international filing date but later than the priority date claimed</p>	<p>*T* later document published after the international filing date or priority date and not in conflict with the application but cited to understand the principle or theory underlying the invention *X* document of particular relevance; the claimed invention cannot be considered novel or cannot be considered to involve an inventive step when the document is taken alone *Y* document of particular relevance; the claimed invention cannot be considered to involve an inventive step when the document is combined with one or more other such documents, such combination being obvious to a person skilled in the art. *&* document member of the same patent family</p>
--	---

Date of the actual completion of the international search 20 December 2001	Date of mailing of the international search report 16/01/2002
---	--

Name and mailing address of the ISA European Patent Office, P.B. 5818 Patentlaan 2 NL - 2280 HV Rijswijk Tel. (+31-70) 340-2040, Tx. 31 651 epo nl, Fax: (+31-70) 340-3016	Authorized officer Blanco Cardona, P
--	---

INTERNATIONAL SEARCH REPORT

International Application No
PCT/EP 01/01559

C.(Continuation) DOCUMENTS CONSIDERED TO BE RELEVANT

Category °	Citation of document, with indication, where appropriate, of the relevant passages	Relevant to claim No.
A	US 5 956 323 A (BOWIE BRUCE H) 21 September 1999 (1999-09-21) abstract column 2, paragraph 3 - paragraph 5 column 5, paragraph 2 - paragraph 6 column 7, line 15 - line 18 figure 3 -----	1-20
A	W0 00 52919 A (ADVANCED MICRO DEVICES INC) 8 September 2000 (2000-09-08) abstract page 4, paragraph 2 page 5, paragraph 5 -page 6, paragraph 3 -----	1, 9, 10, 13, 19, 20

INTERNATIONAL SEARCH REPORT

Information on patent family members

International Application No

PCT/EP 01/01559

Patent document cited in search report		Publication date	Patent family member(s)	Publication date
US 5956323	A	21-09-1999	AU 8670398 A	22-02-1999
			CN 1276948 T	13-12-2000
			EP 1005755 A1	07-06-2000
			JP 2001512937 T	28-08-2001
			NO 20000402 A	27-03-2000
			WO 9907162 A1	11-02-1999
WO 0052919	A	08-09-2000	WO 0052919 A1	08-09-2000